

## Green Star – Office Interiors v1.1

### Water

#### Wat-1 Potable Water Efficiency

Points Available	Points Claimed	CIR Submitted
12	12	N
1	0	N
1	1	N

#### Credit Criteria

Up to twelve points are awarded where it is demonstrated that the predicted potable water consumption for sanitary use by the tenant has been reduced.

This is determined using the Potable Water Calculator, with points being awarded based on the type and rating of fixtures/fittings.

One point is awarded where all dishwashers are 5A rated. If no dishwashers are installed as part of the tenancy fitout then this credit is 'Not Applicable' - type "na" in the 'No. of Points Achieved' column.

An additional point is awarded for fitouts where base building water fixtures associated with the tenancy required replacement to gain more than six points using the Potable Water Calculator. If six points or less were achieved using the Potable Water Calculator, or no alteration to the base building water fittings and/or fixtures were made, then this point is considered 'Not Applicable' (type "na" in the 'No. of Points Achieved' column).

#### Documents Provided

##### Water calculator

✓	A copy of the completed Potable Water Calculator for the tenancy fitout;
✓	As-built (Hydraulic) drawings that clearly indicate all water fixtures/fittings within the tenancy fitout; including: - wc's - taps (kitchen and bathroom) - urinals <del>- showerheads</del>
✓	Evidence of the water efficiency rating of all fittings and fixtures (e.g. as-built drawings with references to water efficiency ratings, extracts from the commissioning report and/or the Operation and Maintenance manual), including: - wc's - taps (kitchen and bathroom) - urinals <del>- showerheads</del>

##### Dishwashers

Credit not claimed.

## Green Star – Office Interiors v1.1

---

### Additional point

✓	A copy of the completed Potable Water Calculator for the tenancy fitout;
✓	Information from the sub-contractor that confirms the quantity (amount) of water efficient fittings supplied for the fitout.
✓	Information from the sub-contractor that confirms that the water efficient fittings supplied for the fitout are the items installed.

### Discussion

- Taps:
  - Kitchen = 1x Caroma Liano sink mixer
  - Bathroom – 5 x Schell Petit self closing mixer
- WCs = 5 x
- Urinals = 2 x

# Green Star - Office Interiors v1.1

Tenancy Fitout:

Level 15, 179 Elizabeth Street

## Potable Water Calculator

Number of Occupants	60
---------------------	----

Hours of Operation	Standard ▼
--------------------	------------

### WATER CONSUMPTION DUE TO FITTINGS:

	Water Efficiency	Percentage of Each Type
<b>Toilets</b>		
	L/flush	
Caroma Leda Invisi Suite 4.5/3	3.4	100%
<enter description here>		
<enter description here>		
<enter description here>		
<b>Urinal Flush Controls</b>		
	L/flush	
Caroma Cube3 0.8 Electronic Flush	0.8	100%
<enter description here>		
<enter description here>		
<enter description here>		
Urinal flush on auto timer *		
<b>Taps</b>		
	L/min	
Schell Petit Self-closing mixer	4.5	100%
<enter description here>		
<enter description here>		
<enter description here>		

% of occupants served

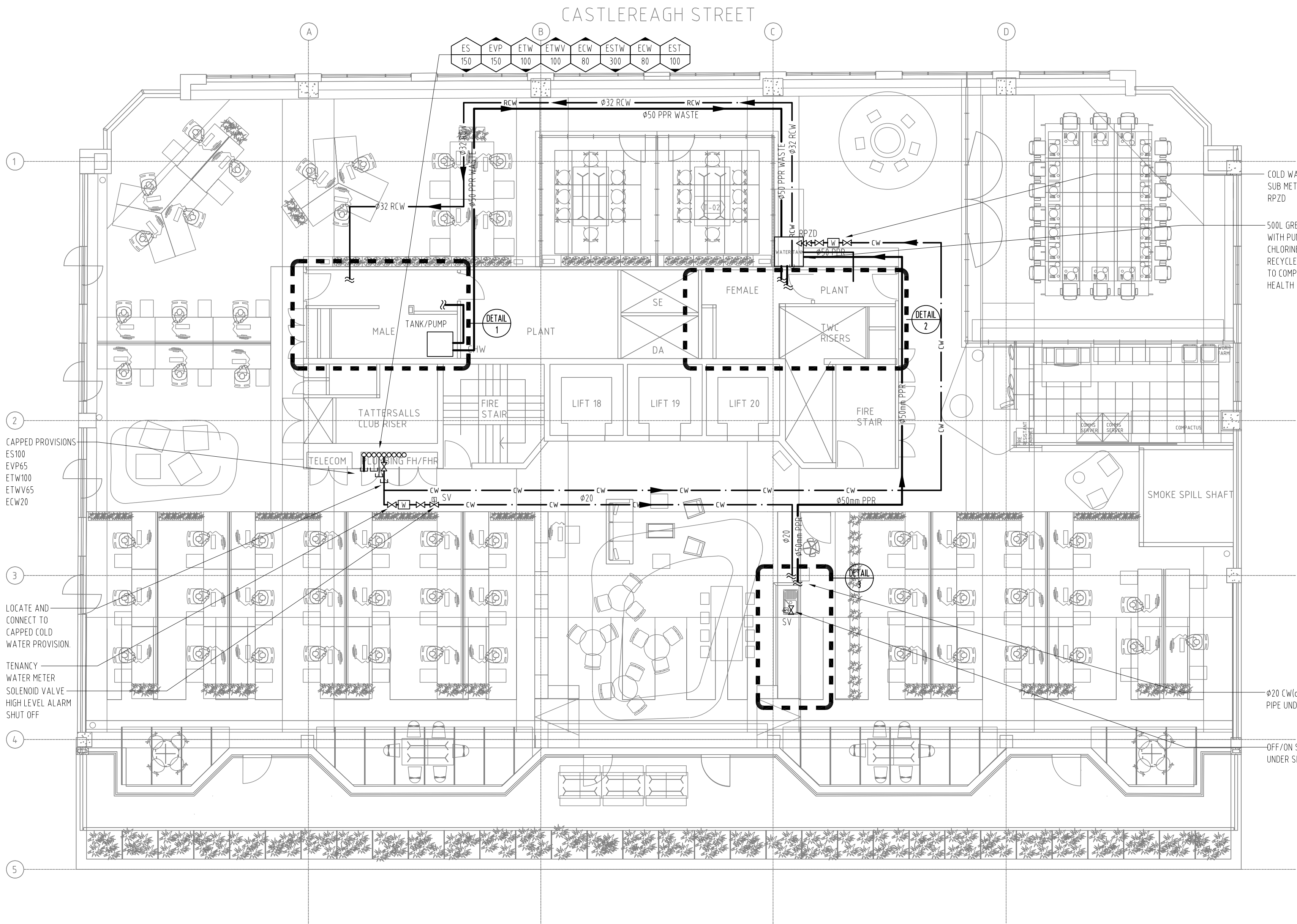
Shower Demand: No showers installed ▼

Showerheads	L/min	
Pre-existing		
<enter description here>		
<enter description here>		
<enter description here>		

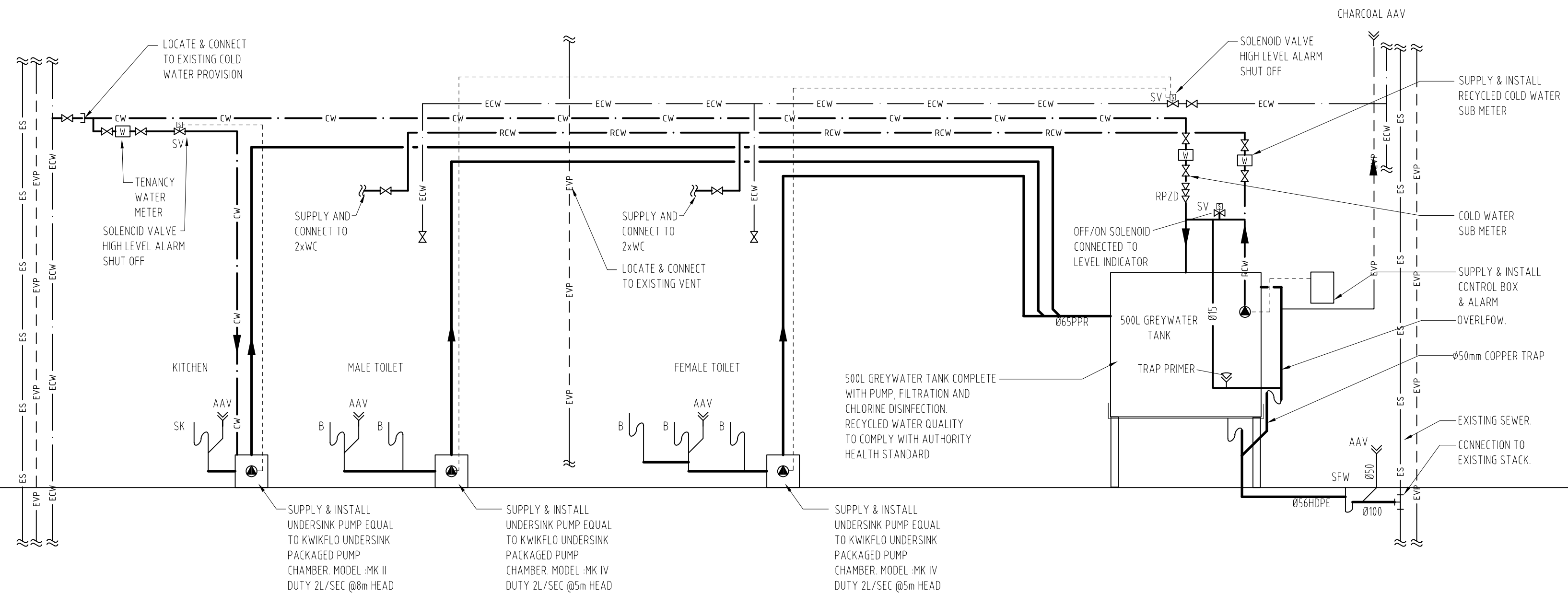
Total Water Consumption From Fittings (L/day/person)	6.91
--	------

Points Achieved	12
-----------------	----

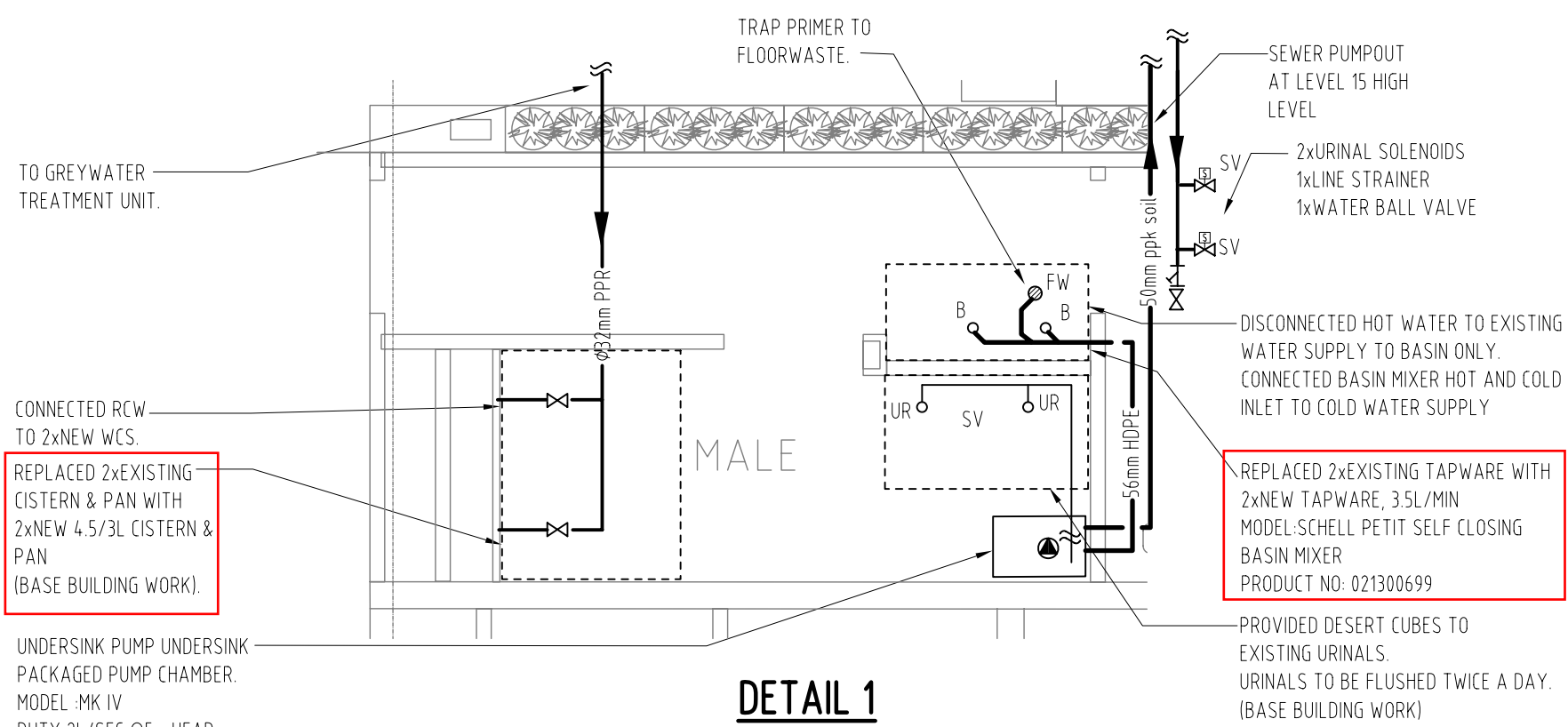
DATE	REV	AMENDMENT	BY	CHKD
13.06.08	AB	ISSUED FOR AS BUILTS	JT	VM



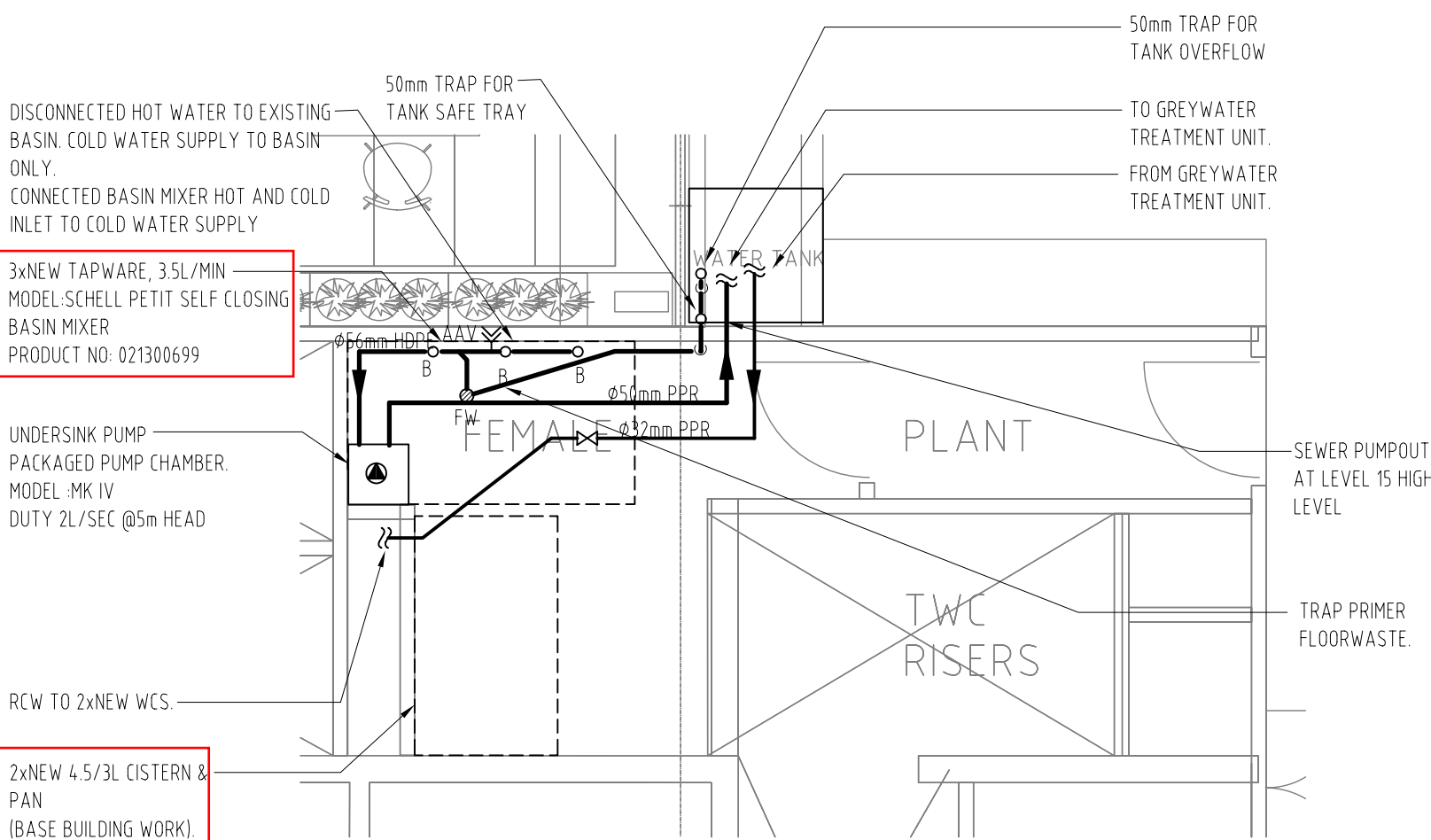
PLAN  
1:100



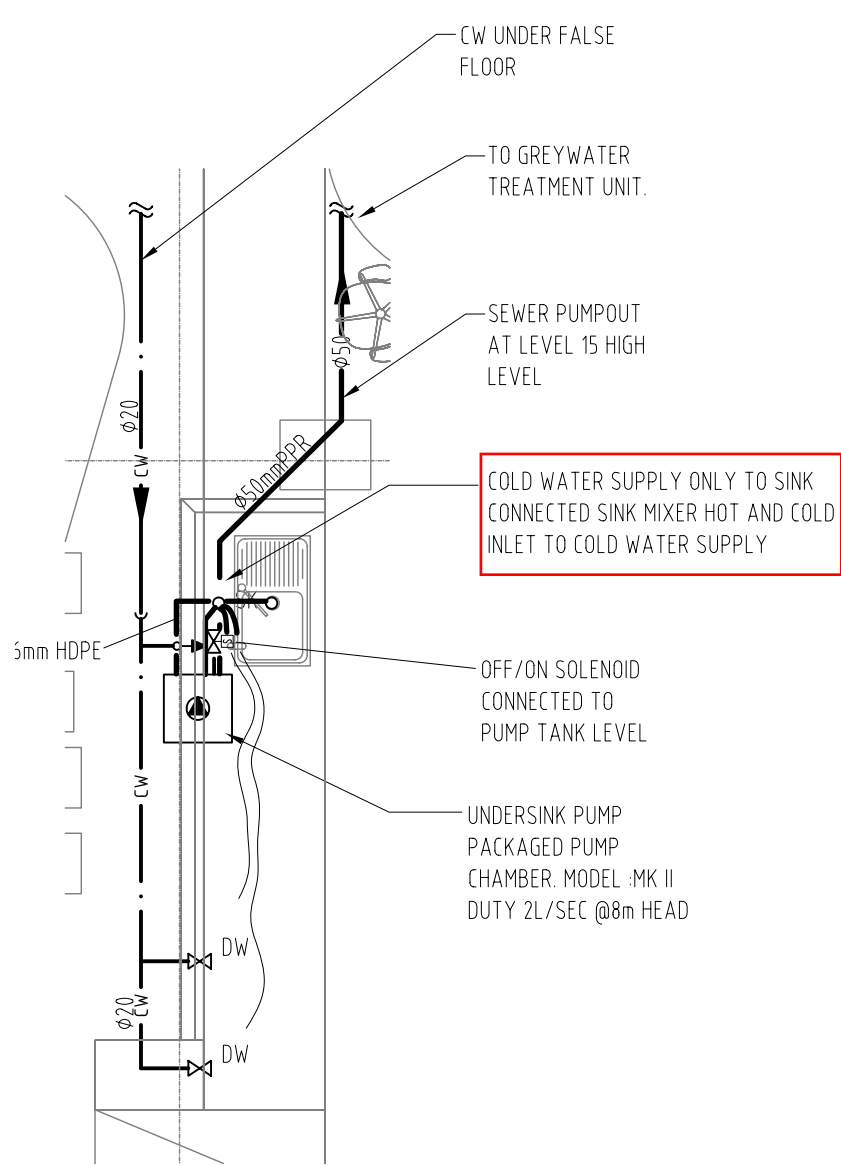
SCHEMATIC  
N.T.S



DETAIL 1  
MALE AMENITIES  
1:50



DETAIL 2  
FEMALE AMENITIES  
1:50



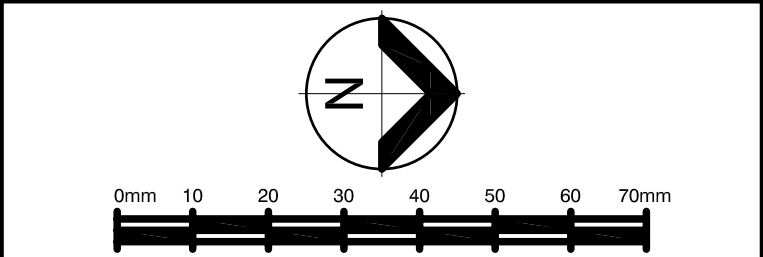
DETAIL 3  
KITCHEN  
1:50

LEGEND

—	SANITARY DRAINAGE
— VP —	VENT PIPE
— CW —	COLD WATER
— HW —	HOT WATER
— RCW —	RECYCLED/RECLAIMED COLD WATER
—	REDUNDANT SERVICE
○	RISER
●	DROPPER
○ FW	FLOORWASTE
⊗	WATER METER
⊗ AAV	AIR ADMITTANCE VALVE
TMV	THERMOSTATIC MIXING VALVE
⌋	CAPPED OFF
⌋	STOP VALVE
⌋ SV	SOLENOID VALVE
B	BASIN
SK	SINK
UR	URINAL
WC	WATER CLOSET
DW	DISHWASHER
SFW	SEALED FLOORWASTE

**PLUMBING CONTRACTORS**

6/252-254 WEST STREET  
CARLTON NSW 2218  
Telephone: 61 2 9747 0033  
Fax: 61 2 9567 0044  
Email: [info@plumbingnsw.com.au](mailto:info@plumbingnsw.com.au)



REFERENCE COORDINATION DRAWINGS			
DESCRIPTION	DRAWING NO.	REV	CHKD

**Lincolne Scott**

Consulting Engineers  
Adelaide Auckland Bangkok  
Brisbane Cairns Honolulu  
Melbourne Perth Shanghai  
Singapore Sydney

Level 1 41 McLaren Street  
PO Box 6245 North Sydney  
New South Wales 2060 Australia  
Telephone 61 2 9807 0800  
Facsimile 61 2 9807 4127  
[sydney@lincolnescott.com](mailto:sydney@lincolnescott.com)

PROJECT  
**LEVEL 15  
179 ELIZABETH STREET  
SYDNEY NSW 2000**

CLIENT  
GBCA

DATE	13.06.08	DRAWN	JT
SCALE	AS NOTED	CHECKED	VM
SHEET SIZE	A1	APPROVED	AJC
CAD FILE	C:\L15-ELEZABETH\H410.dwg		

TITLE  
**HYDRAULIC SERVICES  
179 ELIZABETH STREET**

PROJECT NO.  
SYD 0703900

DRAWING NO.  
H410

REVISION  
AB

AS BUILTS





# Australian Government

## Department of the Environment and Water Resources

### Water Efficiency Labelling and Standards (WELS) Scheme

#### Registration details

#### Urinal Equipment

The following product has been registered according to the requirements of the WELS standard (AS/NZS 6400:2005 Water efficient products-Rating and labelling).

WELS registration number:	R000338
Brand:	CAROMA
Model name or number:	Cube
Date registered:	26/06/2006
Registration expiry date:	23/06/2011
Litres per flush per stall:	0.75
Water efficiency star rating:	6



# Australian Government

## Department of the Environment and Water Resources

### Water Efficiency Labelling and Standards (WELS) Scheme

#### Registration details

#### Tap Equipment

The following product has been registered according to the requirements of the WELS standard (AS/NZS 6400:2005 Water efficient products-Rating and labelling).

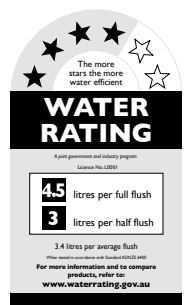
WELS registration number:	R000006A
Brand:	DORF CLARK IND
Model name or number:	Caroma Laser, Caroma Leda Cross, Caroma Liano, Caroma Lumiere, Caroma Lusso Cross, Caroma Lusso Lever, Caroma Starlite, Dorf Banksia, Dorf Bliss, Dorf Bronte, Dorf Fluid, Dorf Kemi Cross, Dorf Kemi Lever, Dorf Kytin, Dorf Loxton
Date registered:	23/11/2005
Registration expiry date:	23/11/2010
Litres per minute:	8.0
Water efficiency star rating:	3

Supersedes all previous issues

# Leda Invisi Suite with Smartflush Technology

### 3.35.2

**4.5/3 Dual Flush Toilet Suite with  
Leda 2000 Smartflush Vitreous China  
Wall Faced Box Rim Pan and  
Invisi Smartflush Cistern for  
Inwall, Induct or Inceiling applications**



## 4.5/3 Dual Flush Toilet Suite with Leda 2000 Vitreous China Wall Faced Box Rim Pan and Invisi Smartflush Cistern for Inwall, Induct or Inceiling applications



The 4.5/3 dual flush **Leda Invisi Smartflush** matched suite uses Caroma Smartflush technology to deliver the latest water-saving technology in sanitaryware products and features smooth sides and concealed plumbing fittings, which allow for varying setouts. The uni-connector pan connecting system allows for setout adjustments from 85mm to 120mm with a recommended setout of 90mm providing installation versatility for new and renovation applications. Suitable for domestic and commercial applications. Concealed cistern and plumbing fittings provide space saving, ease of cleaning and performance matched components to maximise flushing efficiency. For an update on Smartflush refer to <http://www.caroma.smartflush.info>

**Pan:** **Leda 2000 Smartflush** 4.5 litre full flush partial box rim pan.

**Traps:** Universal trap for S or P-trap installations.

**Cisterns:** **Invisi Cistern** – suitable for inwall, induct and in ceiling applications. Inwall version supplied with Compact access panel and buttons. Induct/Inceiling versions supplied with remote buttons and plate. For other push button, access panel and plate options available see 6.15.1.

**Fixing:** **Pan** is supplied with D160 Concealed Pan Fixing Bracket.

**Cistern** is simply mounted into position by clipping onto the two quick clip mounting brackets which are secured with screws to the studwork or induct brickwork. Cistern brackets and flush pipe supplied.

**Seats:** Includes **Pedigree II** seat.

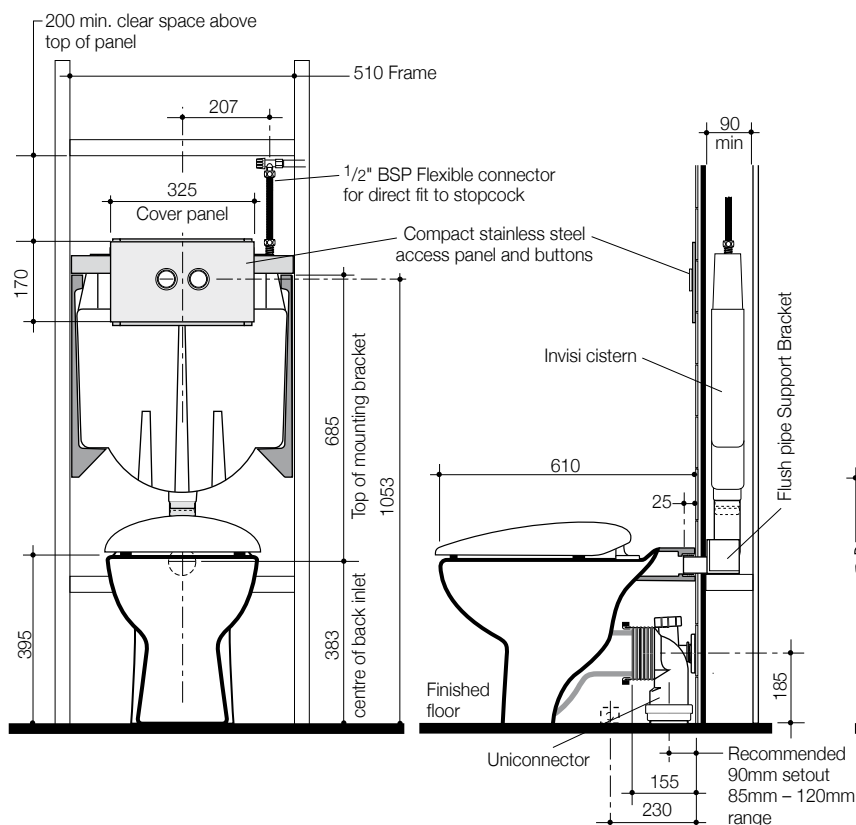
**Colours:** White only.

**Specifications:** The installation of the toilet suite shall be in accordance with the normal minimum drainline grade requirements in AS/NZS 3500.2.  
To specify use product code numbers. See Specifications Section 3 for further information.

**Dimensions:** All dimensions are in millimetres and are subject to normal manufacturing variations. Caroma pursues a policy of continuing improvement in design and performance of its products. The right is therefore reserved to vary specifications without notice.

### Leda Invisi Smartflush Suite Inwall/Induct Installations

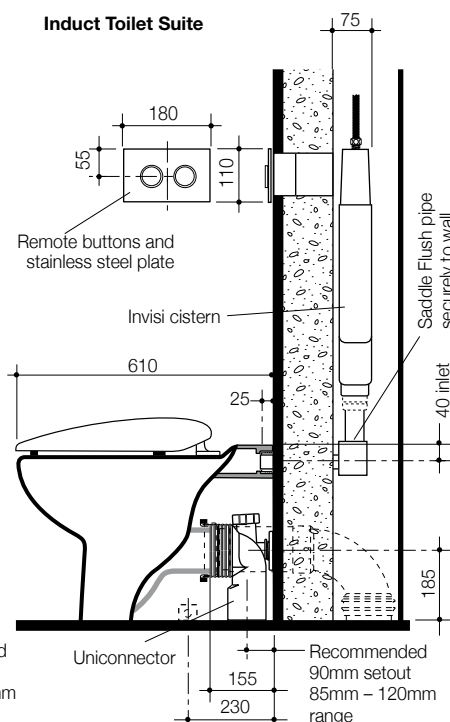
#### Inwall Toilet Suite



#### Leda Invisi Smartflush Toilet Suites with Seat, Dual Flush Push Buttons and Plate: Code No.

4.5/3 litre Back Inlet Internal overflow Inwall suite with Compact access panel and buttons	989115W
Induct/Inceiling suite with remote buttons and plate	989125W

#### Induct Toilet Suite





# MIXER OPTIONS

## Petit Self Closing Mixer



### Product Details

Robust, vandal proof all metal design

Innovative & reliable cartridge technology

Quick & easy to assemble

Manual release and automatic closing function

6 Star water conservation rating





**WaterMark**

## Certificate of Conformity

**Level 1**

*SAI Global hereby grants to:*

### **Schell GmbH & Co. KG Armaturentchnologie**

*“the WaterMark Licensee” the right to use or arrange the use of the WATERMARK as shown above only in respect of the goods described and detailed on the product listed identified on [www.saiglobal.com](http://www.saiglobal.com) which are produced by the WaterMark Licensee or for the WaterMark Licensee by the manufacturer identified below and which comply with the appropriate Standard referred to below as from time to time amended. The WaterMark Licence is granted subject to the rules governing the use of the WATERMARK and the Terms and Conditions for certification. The WaterMark Licensee covenants to comply with all the Rules and Terms and Conditions.*

*Evaluated to:*

**AS/NZS 3718:2005 - Water supply - Tap ware**

*Manufactured by:*

**Schell GmbH & Co. KG Armaturentechnologie**

**Raiffeisenstr 31, OLPE, Germany**

**And**

**Schell GmbH & Co. KG Armaturentechnologie**

**Sassmicker Hammer 32, OLPE, Germany**

The WATERMARK is a registered certification trademark of Standards Australia Limited (A.C.N. 087 326 690) and is issued under licence by SAI Global Certification Services Pty Limited (ACN 108 716 669) (“SAI Global”). This certificate remains the property of SAI Global and must be returned to SAI Global upon its request. Refer to the Schedule for the list of product models.

**Certificate No.:** WMKA00586  
**Issue Date:** 14 December 2007

Alex Ezrakhovich - General Manager Certification  
For and on behalf of SAI Global

**Certified Date:** 7 June 2000  
**Expiry Date:** 6 June 2010

Authorised Local Signatory, SAI Global



**caroma**  
**FOWLER**

**A & P**  
**\*\*\* DELIVERY DOCKET \*\*\***



Invoice: 2180687

Page : 3

Invoice Date: 04/01/08

www.caroma.com.au  
ABN: 35-000-189-499

Tel: 1300 227 662  
Fax: (02) 9202 7099

Warehouse: 0201 User Id: arnemajo Reference: 2120669150 Manifest: 2140035120

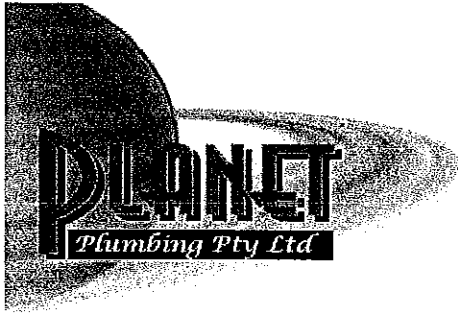
Ordered by:	070032	Deliver to:	070032	Pallets:	V/China:
PROJECT SAMPLES - DISPLAY		Inv Reference: JSK1030		Cartons: 10	Parcels:
LOCKED BAG 20		LOCKED BAG 20		Bags:	Baths:
EPPING NSW 2121		EPPING NSW 2121			
AUSTRALIA		AUSTRALIA			
		Entry through 154 Castlereagh			

Invoice to: 70032-A&P PROJECT SAMPLES - DISPLAY  
GL A/c:  
MKT ADVT PROJECT PROMO

Reference (Job)	Part No	Description	Qty	Unit Price (Excl. GST)	Amount (Excl. GST)	GST	Total (Inc. GST)
Delivery Instructions: Entry through 154 Castlereagh st "Sheraton on the Park Load dock" Pro- Syd Off of Green Building L15							
JSK1030	227060	INVISI/ICON 4.5 COMPACT CISTERN	4				
	320020W	PEDIGREE II SEAT WITH MATT CHROME	4				
	227046S	INVISI DF COMP PANEL&BUTTON	4				
	618410W	LEDA 2000 BI 4.5L PAN WHITE	4				
	687160	D160 LEDA 2000 BRACKET	4				
<p>2004</p> <p>227046S</p>							

Copies of conditions of sale that govern all orders are available on request. Any claims regarding incorrect and/or short deliveries, faulty ware etc., must be advised within 48 hours.

**Terms: Net 30 Days**



*Hydraulic Contractors & Engineers"*

**Planet Enterprises Aust. Pty Ltd**

ABN: 14 092 848 541

6 / 252 – 254 West St

Carlton

NSW 2218

Phone: (02) 9547 0033

Fax: (02) 9547 0044

Web: [www.planetplumbing.com.au](http://www.planetplumbing.com.au)

Email: [nsw@planetplumbing.com.au](mailto:nsw@planetplumbing.com.au)

2 April 2008

Joe Karten  
Green Building Council of Australia  
Level 15, 179 Elizabeth Street  
Sydney, NSW 2000

Dear Joe,

This letter confirms that Planet Plumbing received and installed the following fixtures and fittings in the restrooms at the GBCA fitout at Level 15, 179 Elizabeth Street in Sydney in accordance with AS 3500, local council requirements, and Lincolne Scott's design and specification.

- 4 Caroma Leda Invisi Suite 4.5/3 Dual Flush Toilets (2 in male restroom, 2 in female restroom)
- 5 Schell Petit Self Closing Mixer and Basin.
- 2 Caroma Cube 0.8L Urinals
- 1 Caroma Liano Sink Mixer
- 1 Clark Advance Kitchen Sink
- 2 Dishwashers
- 1 Grey water tank and associated pumps and plumbing

Should you have any queries regarding this matter, please contact me at 02 9547 0033.

Kind regards,

Vince Molluso  
Director  
Planet Plumbing